

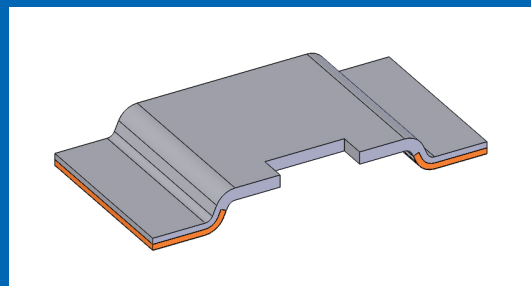
Metal Plate Chip Resistor

Now In Development

» SUMMARY

Noble has planned introduction of our inaugural chip resistor for large current detection. Low resistance range of 10mΩ or less is supported by metal plate resistance.

Structure composed of the resistor element, terminal parts, and a laminated protective layer for enhanced reliability.



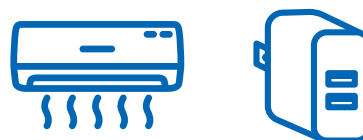
» FEATURES

- 1 **Low resistance**
▶ Resistance 2mΩ, 3mΩ and 10mΩ
- 2 **High power**
▶ Rated power 3W (10mΩ is 2W)
- 3 **Low TCR**
▶ Resistance-Temperature Characteristics ±150ppm/degrees C or less

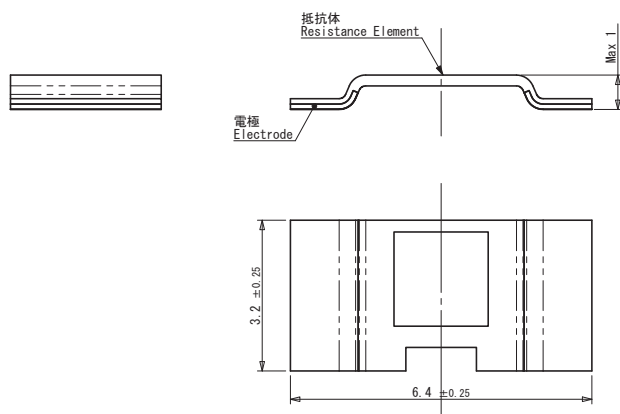
» PRODUCT APPLICATIONS

Current detection for inverter and industrial equipment power supplies, etc.

- General-purpose inverters
- Air conditioners
- Chargers, etc.



» BASIC SPECIFICATIONS



- Dimensions: 6432
- Rated power: 3W (10mΩ is 2W)
- Resistance: 2mΩ, 3mΩ and 10mΩ
- Resistance tolerance: ±1%
- Resistance-Temperature Characteristics: ±150ppm/degrees C or less
- Operating temperature: -55 degrees C to +155 degrees C