

# Rotary Encoder

## - ZRE014 -

Now In Development

### » SUMMARY

Noble's planned introduction of rotary encoder with an optical IC.

Developing from the conventional mechanical type (contact brush) to a non-contact type (brushless), extended long life is provided.

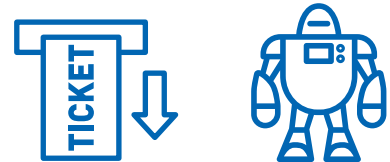


### » FEATURES

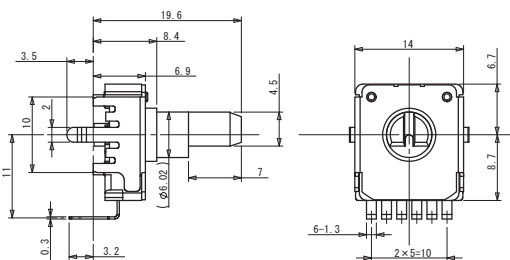
- 1 Optical and Incremental type
- 2 Compact 14mm square encoder
- 3 High pulse

### » PRODUCT APPLICATIONS

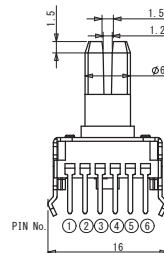
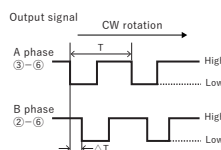
- Detection of roll paper feed for ticket vending machines
- Toy robot joint angle detection
- Measuring instrument



### » BASIC SPECIFICATIONS



No.	Terminal name	Function
1	Cathode(LED)	Cathode for LED
2	Vout2	Output Voltage2
3	Vout1	Output Voltage
4	Vcc	Power Supply
5	Anode(LED)	Anode for LED
6	GND	GND



- Rotation angle: Endless
- Power supply voltage: 2.7~5.5V
- Forward current: 6.0~10.0mA
- Output waveform: Square wave
- Resolution: 50 pulses/rotation
- A and B phase difference:  $\Delta T = (0.25 \pm 0.125) T$
- Maximum frequency response: 500Hz
- Rotational life: 2,000,000 cycles
- Rotating torque: 3mN·m max
- Operating temperature: -10 degrees C to 60 degrees C