

Long Stroke Linear Position Sensor -XLS120-

» SUMMARY

Noble's lightweight and compact linear position sensor, integrating FPC formed by screen-printed silver and carbon traces on PET film with thermoplastic resin.

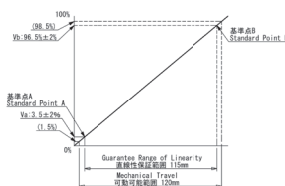
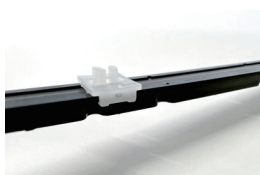
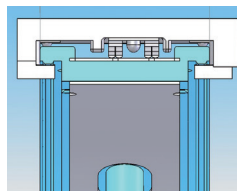
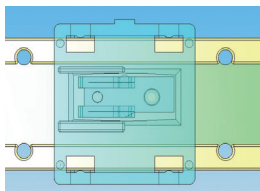


» FEATURES

Linearity and Hysteresis: $\pm 1.0\%$

- ▶ Enhanced linearity and hysteresis through movable detection element, integrated with Noble original monorail style molded body.

1



» PRODUCT APPLICATIONS

- Syringe pump, Various Medical devices
- VR Goggle
- Movable LCD monitor
- Automotive parts
- Industrial equipment



» BASIC SPECIFICATIONS

- Operating temperature: $-15^{\circ}\text{C} \sim +60^{\circ}\text{C}$
- Nominal total resistance: $60\text{Kohm} \pm 30\%$
- Rated voltage: $5\text{V DC } 1\text{mA}$
- Movable amount: 120mm
- Specified linearity range: Up to 115mm
- Operating force: Less than 0.25N
- Slide life: $300,000\text{cycles}$ (Round trip)

2

Extended stroke lengths exceeding 100mm are available.

3

Flexible customization for FPC shape, terminal type, detection range and mounting style is possible.